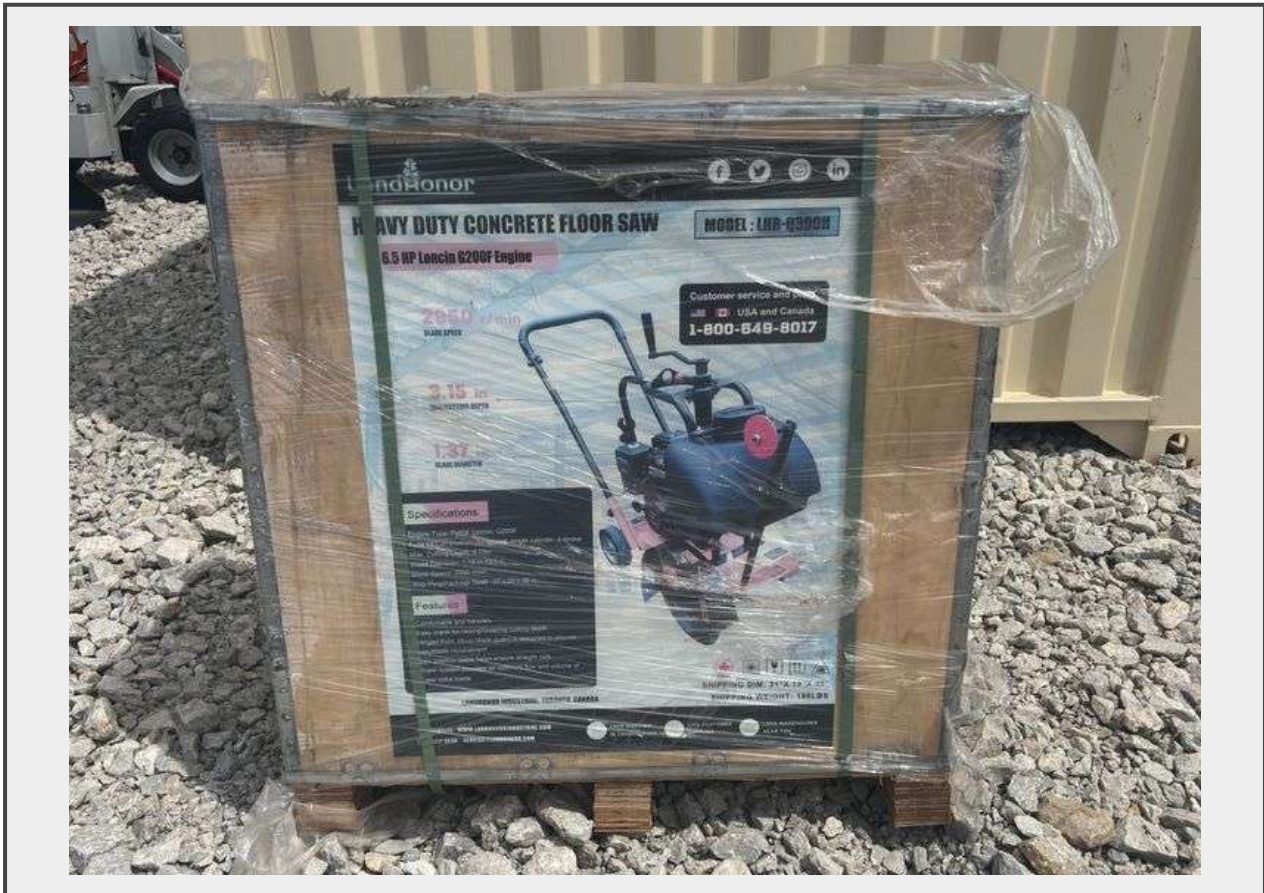


**Sale Name:** 2025 Spring Equipment Auction - Excavator and Mini-Skid Steer Attachments and Tools

**LOT 238 - Heavy Duty Concrete Floor Saw**



**Description**

Unused Heavy Duty Concrete Floor Saw

6.5 HP Loncin G200F Engine

Gross Weight: 196 lbs

Dimension: 37"x 20"x 37"

**Quantity:** 1



<https://bids.aumannauctions.com/>